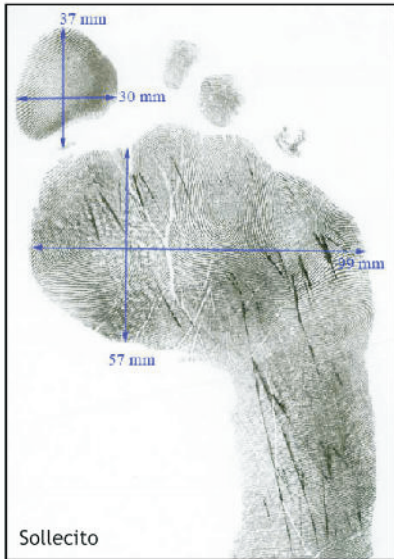


## The Bathmat Footprint



Footprint dimensions exclude Guede, but are highly compatible with Sollecito. No bloody footprints lead up to it. The acquittal court ignored the measurements and held that the print looks like Guede's foot, but did not explain how, if it were Guede, he would have lost one shoe and sock, and hopped to the bathroom to land only there. Guede's shoeprints lead out of Meredith's room in the opposite direction down the hall to the door.

Other prints were revealed with Luminol; they are in two sizes and are also compatible with Sollecito and Knox.